

# Montville

## Habitat Connectivity

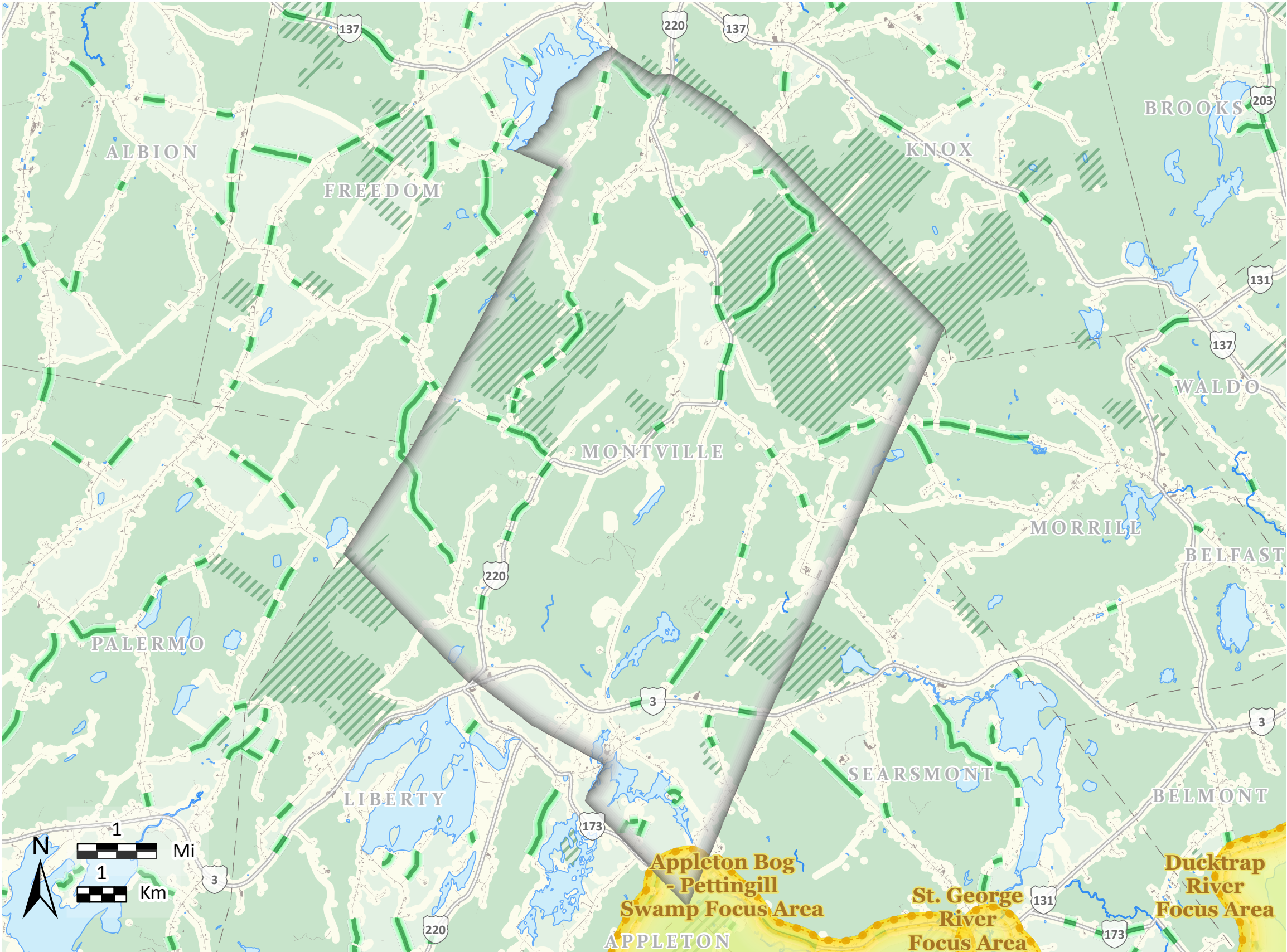


**Beginning with Habitat (BwH)**  
equips Maine communities, landowners, and conservation partners with tools to protect, restore, and connect important habitats and ecosystems in a changing climate.  
[www.beginningwithhabitat.org](http://www.beginningwithhabitat.org)

- Organized Towns**
- Area of Interest**
- Impervious Surface**
- Focus Areas of Statewide Ecological Significance**
- Conserved Lands**
  - Fee and Easement Conservation Land**
- Habitat Blocks**

Comprehensive Plan Review Criteria Rule (DACF Chapter 208) requires blocks >500 acres be considered important natural resources for town comprehensive planning.

  - 0-500 Acres**
  - 500 + Acres**
- Development Buffer**
- Habitat Connectors**
  - Likely Road Crossing Areas for Wildlife**



*This map is nonregulatory and is intended for planning purposes only*

April 2025

TOWNSHIP BOUNDARIES - ME Office of GIS (2021)  
IMPERVIOUS CCAP NOAA - impervious land cover (2022)  
HYDROLOGY - US Geological Survey (2016)  
UNDEVELOPED HABITAT BLOCKS & CONNECTORS - ME Dep of Inland Fisheries and Wildlife (2020)  
ROAD STREAM CROSSINGS - ME Dep. of Inland Fisheries and Wildlife (2022)

CONSERVATION LANDS - ME Dept of Ag., Cons., and For., Land Use Planning Comm'n, ME Dep. of Inland Fisheries and Wildlife (2024)